

FS-40-RD Centrifugal Feeder

Designed for Quiet, High Speed Feeding



Product Overview:

Shibuya Hoppmann's standard FS-40 scallop feeder is designed to feed and orient bottles and other cylindrical parts with the use of urethane scallops. Parts are radially oriented and gently qualified in the scallop pockets by means of sweeps, wipers, pneumatic and/or electric devices depending on specific product characteristics. Oriented parts are discharged and carried away by various downstream in-line devices.

Product Specifications:

| | <u>ANSI</u> | <u>Metric</u> |
|---------------------------|-------------|---------------|
| A. Overall Outside Square | 65" | 1651mm |
| B. Frame Height | 48.50" | 1232mm |
| C. Discharge Height | 36" | 914mm |
| D. Bowl Outside Diameter | 43.46" | 1104mm |
| E. Bowl Inside Diameter | 36.24" | 921mm |
| F. Rim Width | 3.61" | 92mm |
| G. Bowl Depth | 5.95" | 152mm |
| H. Level Foot Adjustment | 4.63" ± 2" | 118mm ± 51mm |

Standard Models:

| Part Number | <u>FS401RLDSA</u> | <u>FS401RLASA</u> |
|---------------|-------------------|-------------------|
| Motor Style | DC | AC |
| Horsepower | 1/2 hp | 1/2 hp |
| Motor Voltage | 90V | 230/460V |

Required Accessories:

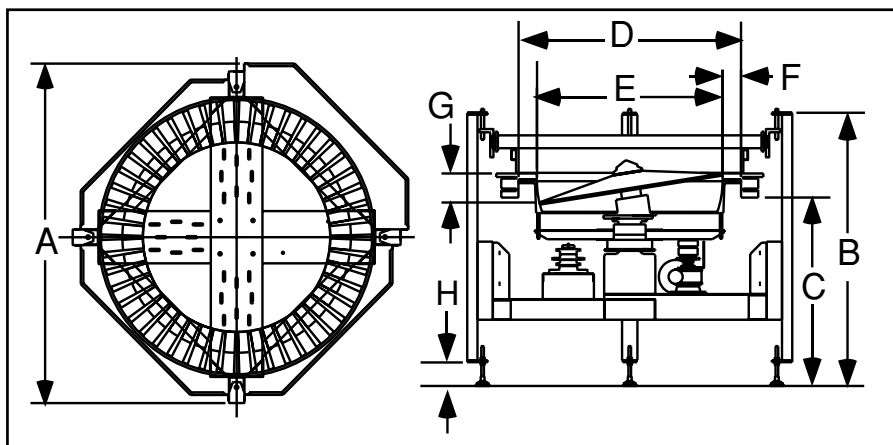
FS Series Scallop Kit FS40SCALXX
(includes segment plates and one of the following number of scallops: 36, 48, 54, 60, or 72).

Standard Features:

- All stainless steel construction
- FDA/USDA approved heavy gauge ABS plastic disc
- Teflon hard-coat finished aluminium bowl, predrilled for scallop mounting
- Air clutch
- Hinged polycarbonated cover with safety interlocks
- Backup ring

Available Options:

- Washdown motors
- Urethane scallop kit
- NEMA 1 encased controller



Shibuya Hoppmann Corporation strives to improve its products and reserves the right to change or discontinue specifications & designs shown in this brochure without notice and without incurring obligation.

01/07